



Connecting to VPN connects your system to California University of Pennsylvania's Network. Unauthorized access is prohibited. Access and use must comply with University Acceptable Use Policies and Procedures.

VPN for Windows

- 1) Navigate to myaccess.calu.edu – you will be presented with a logon screen. Please log in using your Cal U username and password. **DO NOT use the full e-mail address.** If it doesn't work, check your credentials at <https://outlook.com/owa/calu.edu>

NOTE: You can only connect to the VPN from off-campus.

https://myaccess.calu.edu/~CSCOE+/login.htm#form_dbis_text

CALU SSL VPN Service

1852

This is a California University of Pennsylvania system. Unauthorized access is prohibited. Access and use must comply with University Acceptable Use Policies and Procedures.

- 2) After signing in you will be prompted to download the Cisco AnyConnect Secure Mobility Client. This is what allows you to connect to Cal U.

Allow https://myaccess.calu.edu to run "Java?"

CALU SSL VPN Service

Home

Web Applications

Browse Networks

AnyConnect

WebLaunch

Attempting to use Java for Installation

Sun Java applet has started. This could take up to 60 seconds. Please wait...

Platform Detection

ActiveX

Java Detection

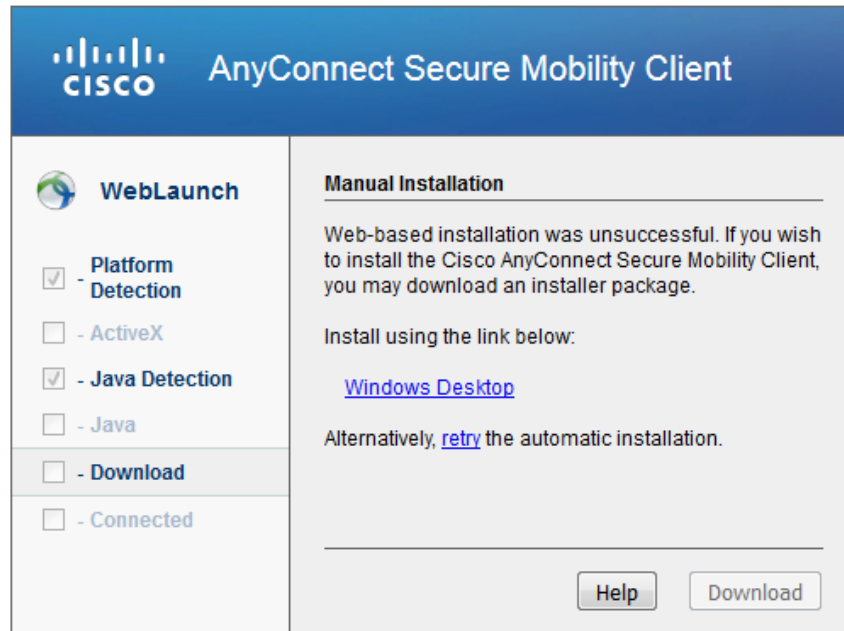
Java

Download

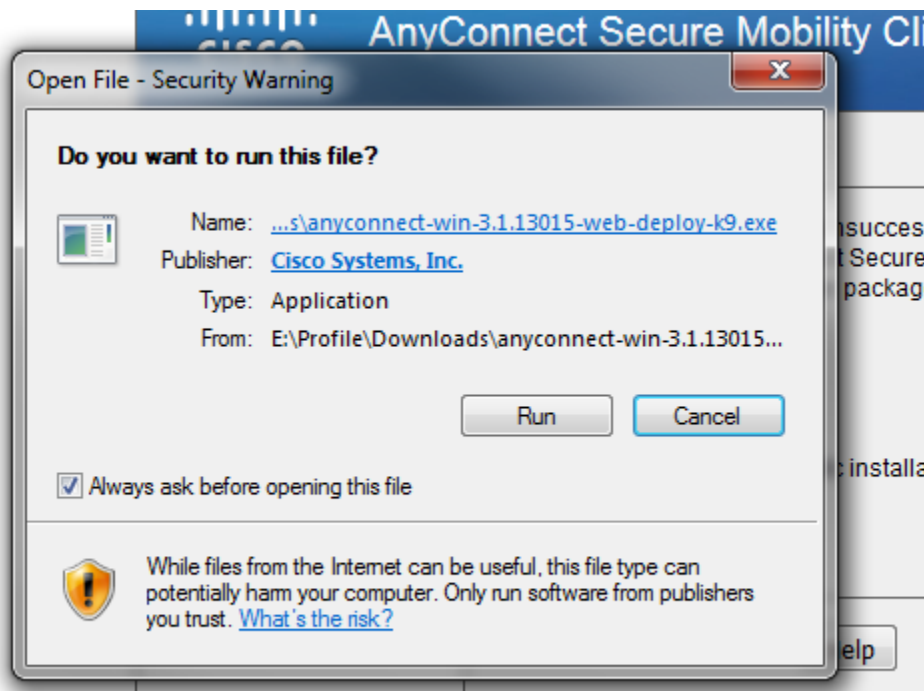
Connected

Help Download

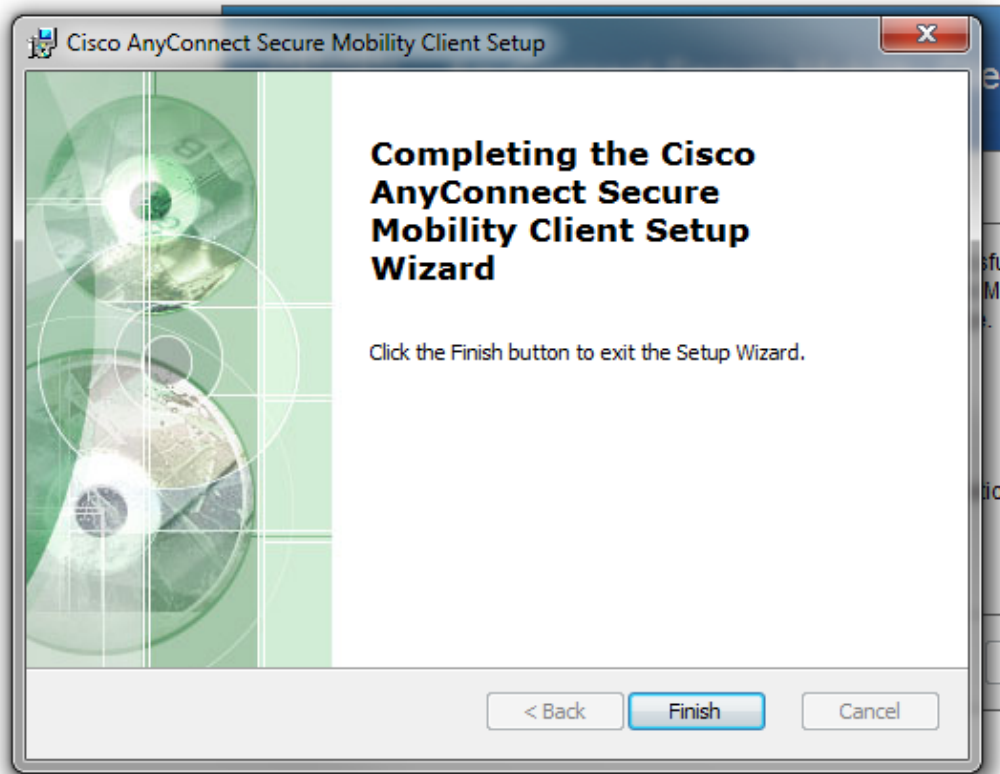
3) If your download fails you will be prompted to install the Cisco client manually.



4) When you are installing the client you will be prompted with the following dialog box. Click Run.

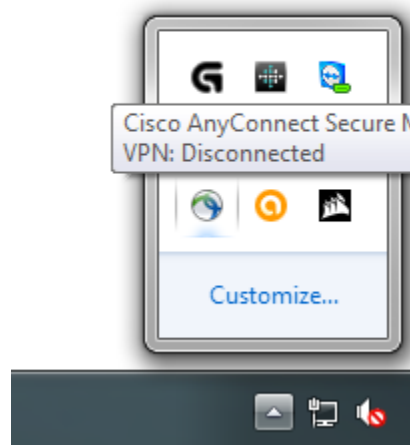


- 5) After you go through the installer click Finish.

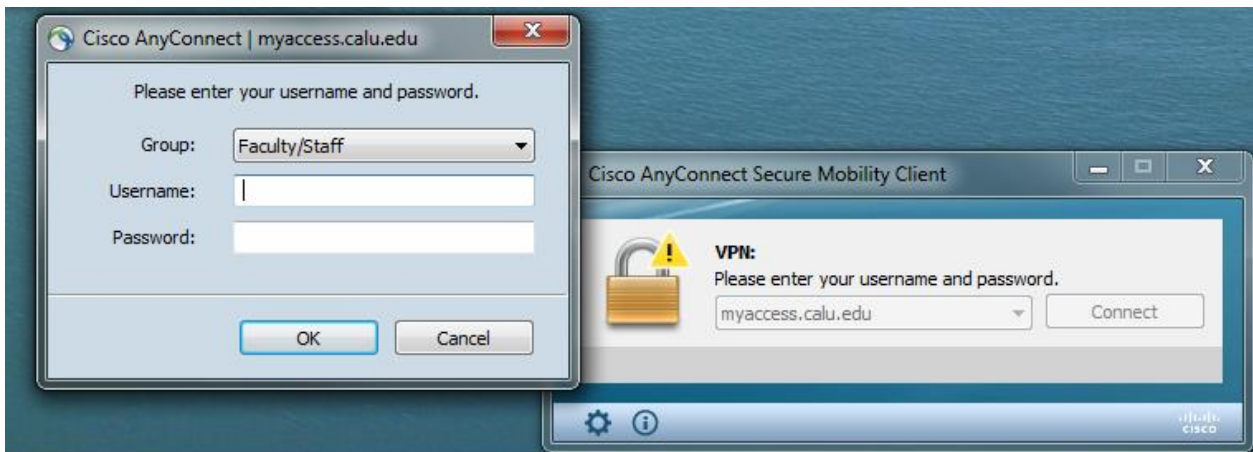


- 6) In the bottom right hand corner of your computer you will have an icon that looks like a white circle with two smaller circles in it. This is your Cisco AnyConnect Client. Click on this to launch your VPN.

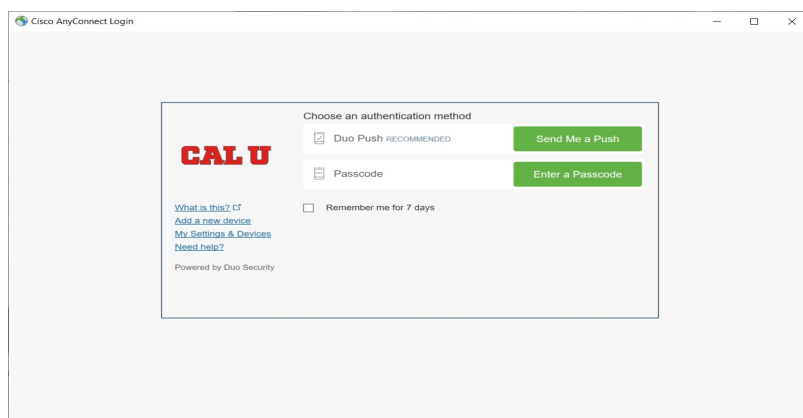
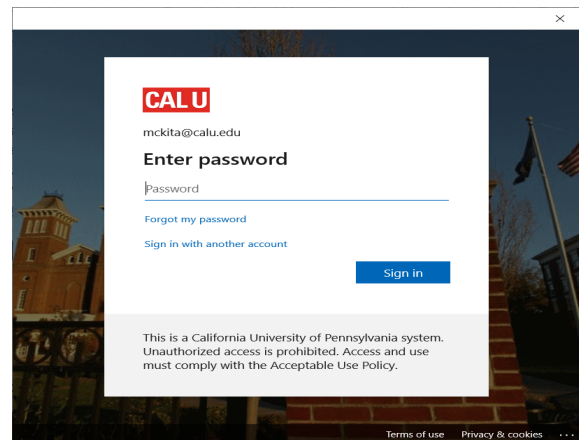
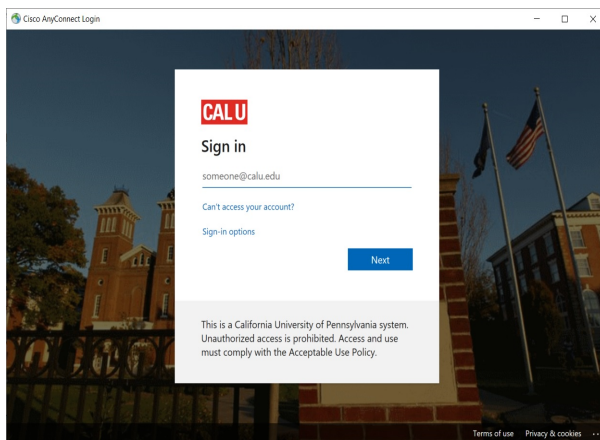
Note: After the initial install, this will be your starting point for using the VPN Service.



- 7) You can also launch Cisco AnyConnect by using the search box in the bottom left hand corner of your computer and searching “AnyConnect” – make sure you do not use a space.
- 8) When using VPN make sure the secure gateway address is myaccess.calu.edu
- 9) Click on this and you will be prompted to sign in with your Cal U username and password. Again, if you have any issues with the log in please check your credentials at <https://outlook.com/owa/calu.edu>



- 10) You could be prompted to prove identity Using two-factor authentication. You can send a push or text message to a mobile device to validate.



- 11) At this point you will be able to launch Remote Desktop, connect to Banner, and access other University resources just like you would from the Cal U network.