



California University of Pennsylvania

Office of Sponsored Programs &  
Research

Annual Report

Fiscal Year 2012 - 2013

Cheryl Vogrig, Director  
[vogrig@calu.edu](mailto:vogrig@calu.edu)

Donna Gilmore, Post-Award Administrator  
[gilmore@calu.edu](mailto:gilmore@calu.edu)

Kim Rabbitt, Secretary  
[rabbitt@calu.edu](mailto:rabbitt@calu.edu)

## Office of Sponsored Programs & Research Annual Report

### Fiscal Year 2012-2013

**Goal:** Foster a campus culture that is conducive to sponsored programs and research, and to provide the best customer service to the University community.

**Objectives:**

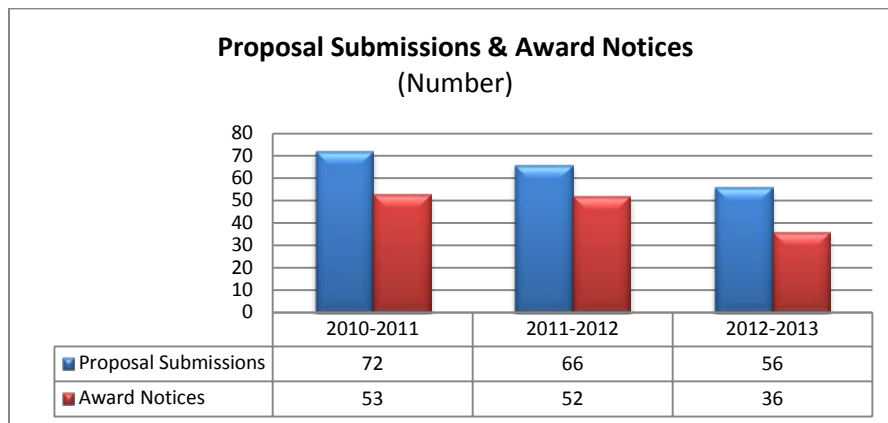
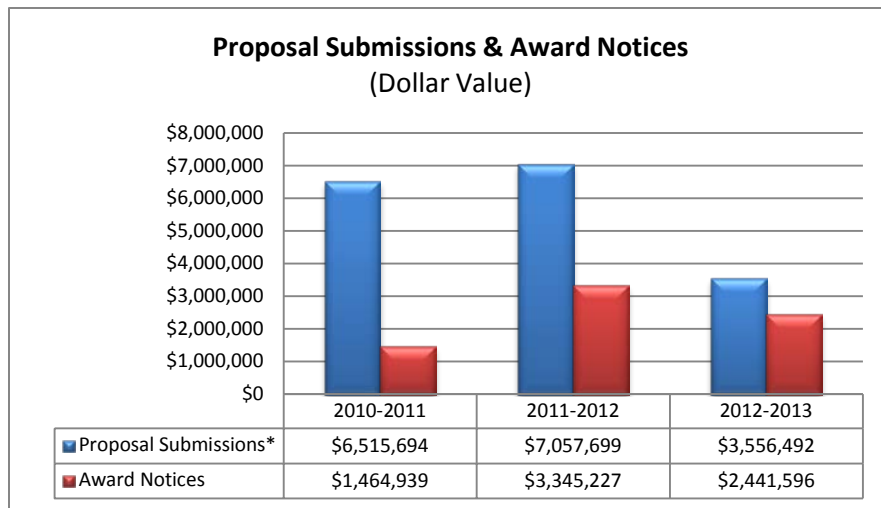
- Promote grantsmanship as an essential element in University operations
- Increase the visibility and improve the reputation of the OSPR
- Establish and pursue a Cal U grants/research agenda with specific areas to target for focused efforts
- Build relationships with funders and collaborators
- Motivate/Stimulate faculty, staff and students to pursue external funding
- Improve the effectiveness and efficiency of Cal U's pre-award and post-award processes
- Improve the effectiveness of recovered indirect cost redistribution

**12-13 Activities:**

- Submitted 56 proposals totaling \$3,556,492 and received notice of 36 awards totaling \$2,441,596. This equates to a success ratio of 64% and funding yield of 69%.
- Engaged 35 faculty and 12 staff in grant writing
  - 17 faculty members from the College of Education and Human Services
  - 10 faculty members from the Eberly College of Science and Technology
  - 2 faculty members from the College of Liberal Arts
  - 18 staff members
- Fifty-eight (58) percent of funded awards were federal, 3% were state, 31% private and 8% PASSHE.
- Forty-four (44) percent of awards were for service, 33% were for instruction, 11% were for research, 8% for equipment, and 6% for scholarship.
- Reached out to 117 faculty and staff by conducting briefings at departmental meetings
- Hosted the Grant Writers' Recognition Ceremony on November 14, 2012. The *Laude 2011-2012* (yearbook of grant activities) was unveiled in electronic format.
- Convened the 15 member OSPR Advisory Board to provide feedback and guidance in the implementation of the activities set forth in the strategic plan.
- Streamlined processes and documented procedures to improve the effectiveness and efficiency of pre- and post-award processes including the automated routing sheet.
- Developed the President's INSPIRES Program and WKE's for Grants to motivate/stimulate faculty to engage in grant writing.
- Developed and administered pre-and post-award customer satisfaction surveys.
- Established OSPR presence on LinkedIn and released the OSPR Listserve to enhance communication.

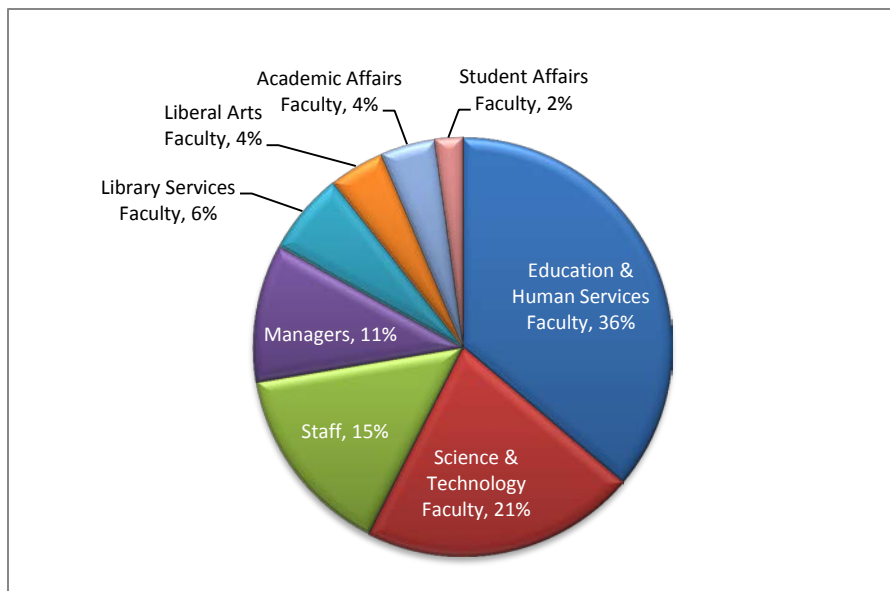
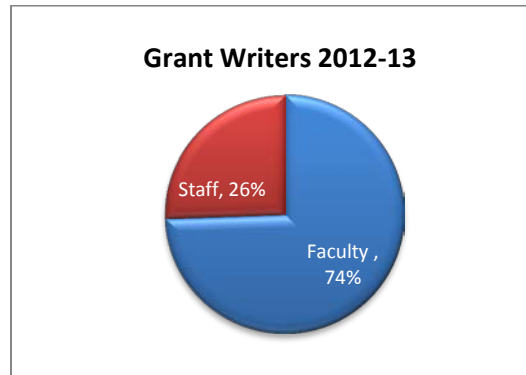
## Grant Proposals: Submissions & Awards

The charts below illustrate the number of proposal submissions and award notices during the past three years in dollar value and number. For both submissions and awards, the measurement period is the fiscal year (July 1 to June 30); however, awards may be for submissions from previous fiscal years. Over the three-year period, the number and dollar value of proposal submissions declined 45% and 22%, respectively, while award notices decreased in number 32% but increased in dollar value 67%. Also, while the success ratio of awards to submissions declined from 74% in 2010-11 to 64% in 2012-13, the funding yield (awards as a percentage of submissions) increased from 22% to 69% during the period.



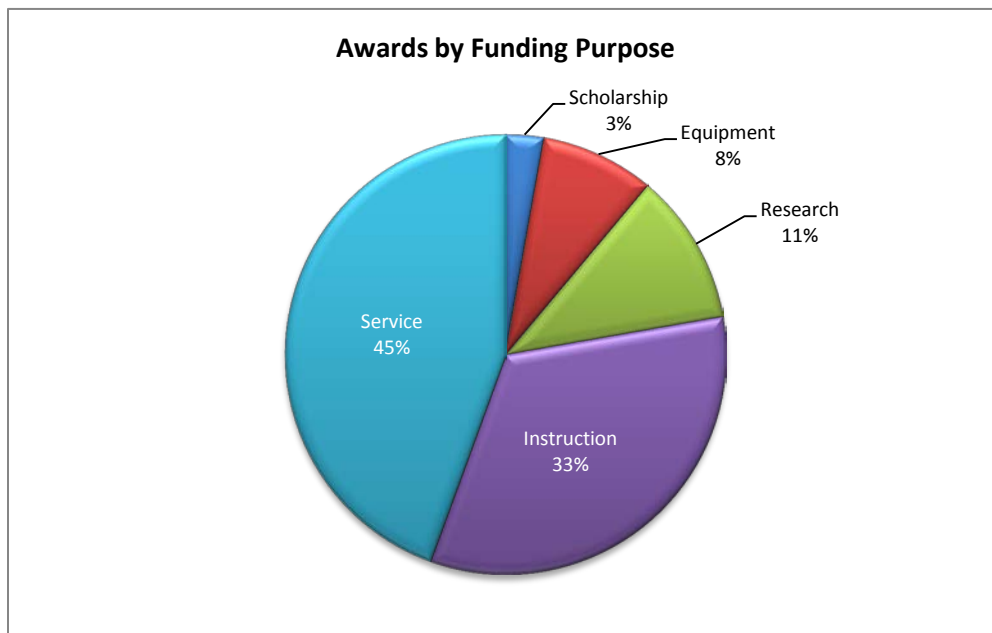
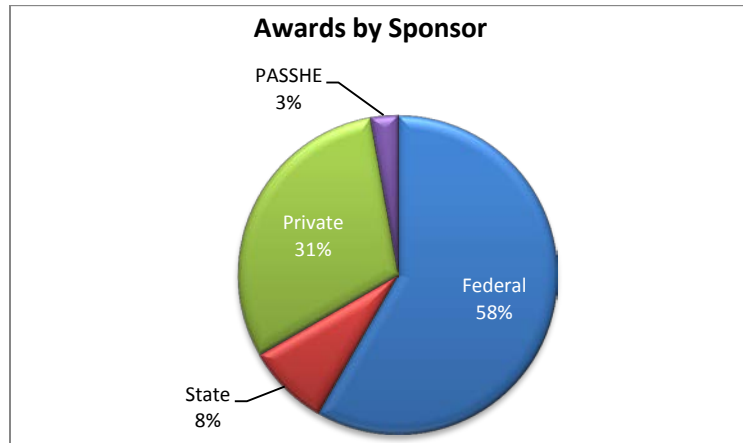
## Grant Writers

The chart below illustrates the percentage of grant writers in various divisions on campus. The top chart shows that nearly three-quarters of the grant writers were faculty. The bottom chart breaks out percentages further and shows that the top three sources for grant writers were the College of Education & Human Services (36%), the Eberly College of Science & Technology (21%), and Staff (15%).



## Grant Awards: Sponsor & Purpose

The charts below illustrate the sponsors and funding purpose for grant awards in 2012-13. There were four categories of funding sponsors with federal contributing more than one-half of the awards (21 of 36). The primary purposes for awards were service (16 awards) and instruction (12 awards).



**Grants and Contracts Awarded  
Fiscal Year 2012-2013**

Grant/Contract		Project Director	Amount
<b>Jul-12</b>	1	Reducing Underage and Dangerous Drinking 2012-2013	Ms. Donna George \$17,500
	2	Expanding the Hydrologic Classroom: Connecting Campus and Community in the Pike Run Watershed	Dr. Kyle Fredrick \$25,000
<b>Aug-12</b>	3	PA Space Grant Consortium 2013	Dr. Thomas Mueller Dr. Chad Kauffman \$5,750
	4	Procurement Technical Assistance Program (GACO) 2012-2013	Ms. Deborah Wojcik \$189,175
<b>Sep-12</b>	5	Picture Tools - Mobile: Development and Testing of an Electronic Performance Support System with Modeling for Students with High-incidence Disabilities	Dr. Katherine Mitchem \$64,863
	6	Student Support Services 2012-2013	Ms. Christine Crawford \$284,754
	7	Teaching with Primary Sources 2012-2013	Dr. Michael Brna \$200,000
	8	HQ-TEEMS 2012-2013 (Highly Qualified Teachers in Exceptional Education, Math and Science)	Dr. Katherine Mitchem Dr. Kalie Kossar \$85,496
	9	AmericaView 2012-2013: StateView Program Development and Operation for the State of PA	Dr. Thomas Mueller \$23,500
	10	Community ATOD Limited Term Single Service Prevention	Ms. Donna George \$2,000
	11	Hand-in-Hand: Bringing Families to School 2012-2013	Ms. Nancy Skobel \$55,291
	12	WT Morris Scholarship Program	Dr. Kevin Koury \$10,000
<b>Oct-12</b>	13	Preventing the Abuse and Misuse of Prescription Medications	Ms. Donna George Dr. Timothy Susick \$2,500
<b>Nov-12</b>			
<b>Dec-12</b>	14	Electronic Health Record Conversion for the Cal U Speech & Hearing Clinics: Aligning Clinician Training with Current Healthcare Practices	Dr. Robert Skwarecki Dr. Samantha Procaccini Ms. Nancy Carlino \$4,827

**Grants and Contracts Awarded  
Fiscal Year 2012-2013**

		Grant/Contract	Project Director	Amount
<b>Jan-13</b>	15	Bridging Cultures Bookshelf: Muslim Journeys	Ms. Monica Ruane Mr. Ryan Sittler	\$1,000
	16	Evaluation Services for the 21st Century Community Learning Center 6A LEARN Afterschool Program	Ms. Sheri Boyle	\$15,000
	17	PA STEM Girls' Collaborative 2013	Dr. Lisa Kovalchick	\$10,000
<b>Feb-13</b>	18	Pedometer Based Walking for Fitness Program	Dr. Scott Hargraves	\$1,000
	19	Special Education Program: Supporting Training for Students with Intellectual Disabilities 2013	Dr. Katherine Mitchem	\$51,680
	20	Biomonitoring and Assessment of Streambank Fencing Sites at Enlow Fork of Wheeling Creek 2013	Dr. David Argent	\$51,540
	21	PA STEM Girls Collaborative TECHBRIDGE Project	Dr. Lisa Kovalchick	\$4,500
	22	Chemistry Laboratory Equipment Spring 2013	Dr. Gregg Gould	\$3,000
	23	Public Safety Equipment (additional funding)	Mr. Michael Miles	\$18,598
<b>Mar-13</b>	24	Community Fellows College Access Corps 2013- 2014	Ms. Nancy Skobel Ms. Diane Williams	\$47,000
	25	Scholars in Service to Pennsylvania 2013-2014	Ms. Nancy Skobel Ms. Diane Williams	\$23,500
	26	Gettysburg Visitor Study 2013-2014	Dr. Susan Ryan	\$8,500
	27	Health Education Awareness Resource Team 2013- 2014	Ms. Fran Fayish	\$1,000
<b>Apr-13</b>	28	Real-time Lightning Observing System	Dr. Mario Majcen	\$25,000
	29	Ongoing Paddlefish Population Status, Abundance, and Restoration Planning, Phase III	Dr. David Argent	\$31,200
	30	ANSYS STEAM Summer Camp	Dr. Stephen Whitehead	\$5,000
<b>May-13</b>	31	Cal U/IU 1 ESL Professional Development Project 2013-2014	Dr. Kevin Koury	\$358,672
	32	Gambling Conference	Ms. Donna George Dr. Timothy Susick	\$0
	33	Upward Bound - Fayette County 2013-2014	Mr. John Kula Ms. Laura Giachetti	\$366,729
	34	Upward Bound - Greene County 2013-2014	Mr. John Kula Ms. Laura Giachetti	\$248,771
	35	Procurement Technical Assistance (GACO) 2013- 2014	Ms. Deborah Wojcik	\$193,500
<b>Jun-13</b>	36	PA Space Grant Consortium 2014	Dr. Thomas Mueller Dr. Mario Majcen	\$5,750
				<b>\$2,441,596</b>